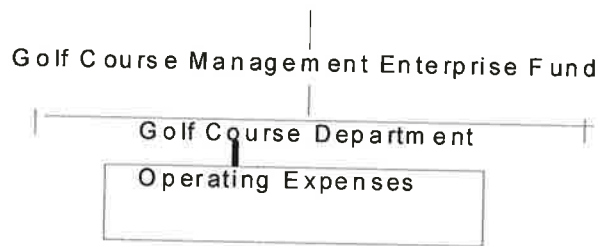


GOLF COURSE MANAGEMENT

The Golf Course Management Enterprise Fund is a proprietary fund. Proprietary funds are used to account for operations that are financed and operated in a manner similar to a private business and which provides services primarily on a user charge basis.

SERVICES PROVIDED

The Golf Course Management Fund provides a quality of life services to the community such as, a 9 hole golf course for all citizens.



Funded Activities

- Funding of Golf Course Department

**GOLF
SUPERINTENDENT**

Phone: 806-872-8100

Fax: 808-872-4338



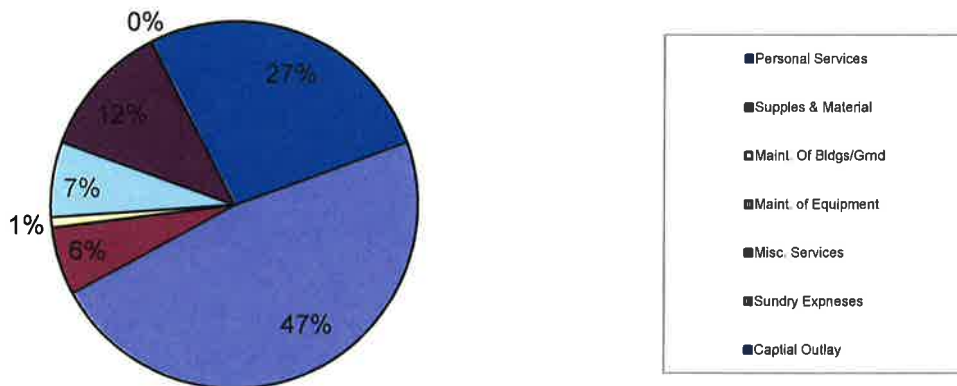
MUNICIPAL GOLF ENTERPRISE FUND
FUND SUMMARY AND PROJECTION OF FINANCIAL CONDITION
AT END OF FISCAL YEAR 2013-2014

	Budgeted FY2011-12	Actual FY2011-12	Budgeted FY 2012-13	Estimated FY 2012-13	Proposed FY 2013-14
OPERATING ACCOUNT					
Total Working Capital Available Oct. 1st	0	-	-	0 0	0
<i>Revenues:</i>					
Operating	137,046	150,817	137,046	147,450	165,700
Non-Operating	0	0	0	-	0
Total Revenues	137,046	150,817	137,046	147,450	165,700
<i>Expenses:</i>					
Operating	158,268	191,484	194,685	182,657	237,672
Non-Operating	0	0	0	0	0
Total Expenses	158,268	191,484	194,685	182,657	237,672
Net Income (Defecit)	(21,222)	(40,667)	(57,639)	(35,207)	(71,972)
Adjustments/Income to Working Capital	0	0	0	0	0
Transfers from G.F./Invest.	67,951	14,227	57,639	48,657	71,972
Total Working Capital Available Sept. 30	46,729	(26,440)	0	13,450	0
RESERVE ACCOUNTS					
Capital Equipment Reserve					
Begining Balance (10/1):		0	0	0	0
Increase (Decrease) deposit/int in Capital Reserve:			0	0	
Withdrawal	0	0	0	0	0
Ending Balance (9/30):	0	0	0	0	0

**MUNICIPAL GOLF ENTERPRISE FUND
EXPENSE SUMMARY FISCAL YEAR 2010-2011**

EXPENSES BY CATEGORY: Municipal Golf Course

Expense Category	Budgeted FY2011-12	Actual FY2011-12	Budgeted FY 2012-13	Estimated FY 2012-13	Proposed FY 2013-14
Operating Expenses:					
100 Personal Services	86,168	83,266	94,167	92,809	125,522
200 Supplies & Material	11,400	20,235	15,300	16,400	17,150
400 Maint. of Bldgs/Grn	19,000	25,153	24,000	10,000	22,500
500 Maint. of Equipmen	5,600	10,817	8,800	3,650	9,300
600 Misc. Services	28,400	40,563	36,618	46,970	59,400
700 Sundry Expenses	2,200	1,068	2,300	1,000	2,300
900 Capital Outlay	5,500	10,382	13,500	11,828	1,500
Gross Operating Exp.	158,268	191,484	194,685	182,657	237,672
Finance Source/transfer	(21,230)	(40,668)	(57,639)	(48,207)	(68,384)
Net Operating Expenses	137,038	150,816	137,046	134,450	169,288
Non-Operating Expenses:					
					0
Total Fund Expenses	158,268	191,484	194,685	182,657	237,672



MUNICIPAL GOLF ENTERPRISE FUND
REVENUE DETAIL FISCAL YEAR 2011-2012

REVENUE DETAIL:

OPERATING REVENUES:

GOLF SERVICE FEES 151,700
Revenue from the membership dues, green fees, cart rentals and cart permits

MISCELLANEOUS FEES 14,000
Advertisement, cart shed electricity, concession fees, and sales tax

Subtotal 165,700

NON-OPERATING REVENUES:

INTEREST 0
Revenue from interest earnings from the investment .

Subtotal 0

Total Municipal Golf Enterprise Fund Revenues: **165,700**

MUNICIPAL GOLF COURSE

Municipal Golf Fund

Account : 531

EXPENDITURE SUMMARY:

Account Category	Budgeted	Actual	Budgeted	Estimated	Proposed
	FY2011-12	FY2011-12	FY 2012-13	FY 2012-13	FY 2013-14
100 Personal Services	86,168	83,266	94,167	92,809	125,522
200 Supplies & Materials	11,400	20,235	15,300	16,400	17,150
400 Maint. Bldgs/Grnds	19,000	25,153	24,000	10,000	22,500
500 Maint. of Equipment	5,600	10,817	8,800	3,650	9,300
600 Misc. Services	28,400	40,563	36,618	46,970	59,400
700 Sundry Services	2,200	1,068	2,300	1,000	2,300
900 Capital Outlay	5,500	10,382	13,500	11,828	1,500
Gross Program Exp.	158,268	191,484	194,685	182,657	237,672
Less Reimbursements	(21,230)	(40,668)	(57,639)	(48,207)	(68,384)
Total Dept. Budget	137,038	150,816	137,046	134,450	169,288

PROGRAM SUMMARY:

Program Title	Budgeted	Actual	Budgeted	Estimated	Proposed
	FY2011-12	FY2011-12	FY 2012-13	FY 2012-13	FY 2013-14
1 Golf Maint. Service	137,038	150,816	137,046	134,450	169,288

FUNDING SUMMARY:

Funding Source	Budgeted	Actual	Budgeted	Estimated	Proposed
	FY2011-12	FY2011-12	FY 2012-13	FY 2012-13	FY 2013-14
Golf Course	137,038	150,816	137,046	134,450	169,288
Gross Dept. Exp.	137,038	150,816	137,046	134,450	169,288